

StorView™ Path Manager

Making RAID Easy

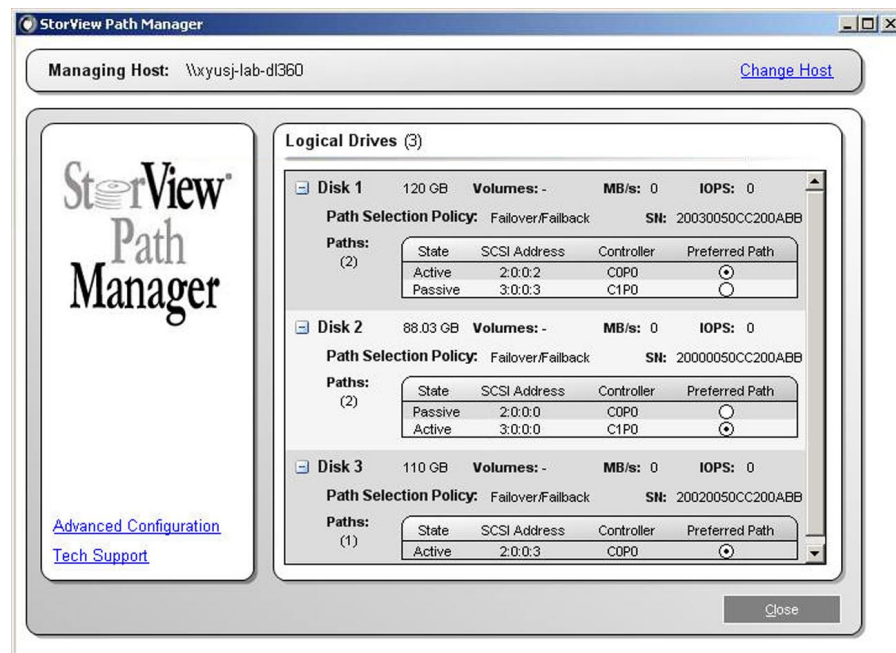
• Ensuring continuous access to critical data

A high reliance on databases, Internet, and e-commerce means IT departments increasingly require that RAID systems be available year round, 24 hours per day, seven days a week.

Storage consolidation with today's RAID systems in Storage Area Networks (SANs) increases the risk of data loss to critical applications. Multi-pathing increases availability and mitigates risk by automatically using more than one path to a RAID system. StorView Path Manager is a multi-pathing solution from Xyratex that provides fault tolerance against single-point-of failures in SANs and direct attached configurations that include Xyratex RAID systems. StorView Path Manager is designed to provide fail-over through the use of redundant physical path components, adapters, cables, and switches between the server and Xyratex RAID system. In the event that one or more of these components fails, applications can still access their data.

• Easy-to-use and reliable application fail-over

StorView Path Manager leverages operating system multi-pathing capabilities for easy-to-use and reliable application fail-over. StorView Path Manager for Windows is based on Microsoft's MPIO and is a certified Device Specific Module (DSM) with an intuitive graphical user interface for designating alternate paths. StorView Path Manager for Linux is based on native Linux Device Mapper. Multi-pathing with StorView Path Manager works in both single host configurations or clustered host configurations.



Features

- Xyratex RAID high availability option for dual controller configurations
- Risk reduction for critical applications
- Windows and Linux multi-pathing
- Single host and clustered host environments
- Customizable branding and logos
- Part of the StorView family of storage management software for Xyratex RAID