

Xyratex StorView for JBODs

Making Storage Management Easy

Storage Management Software for JBODs, SBODs & EBODs

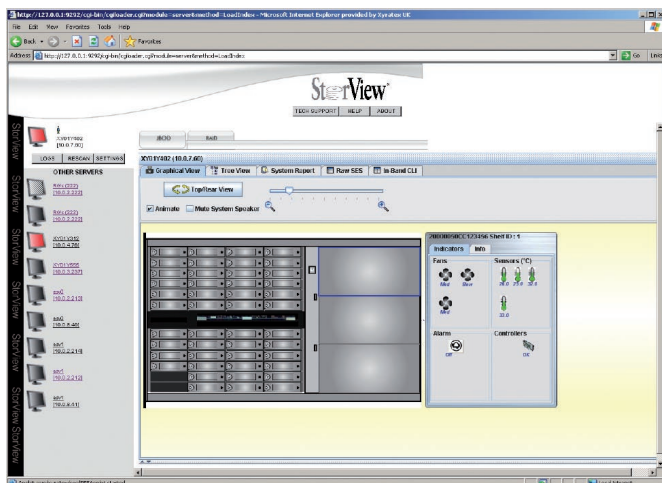
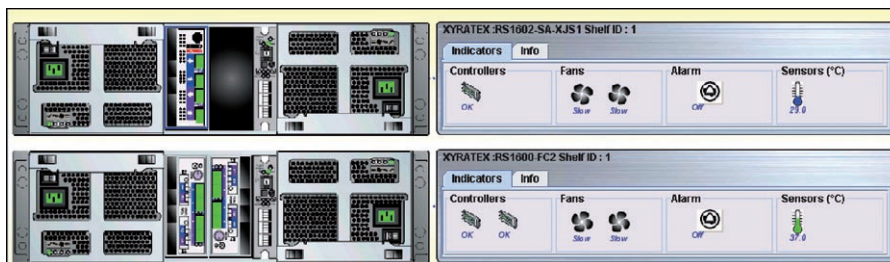
StorView for JBODs is Xyratex's premier storage management software for minimizing IT administration and increasing availability of Xyratex's full line of Hard Disk Drive (HDD) enclosures.

In Storage Area Networks (SANs), a single deployment can work with multiple enclosures. Administrators now have a graphical interface to monitor multiple enclosures and all installed disk drive information, making installation and management of Xyratex enclosures and installed disk drives easier and more efficient. Xyratex StorView for JBODs installs on either a Windows or Linux host and uses a Fibre Channel connection to the Xyratex enclosures to monitor and manage. Administrators can remotely monitor environments, firmware release information, drive information. Xyratex for JBODs helps easily and accurately identify drives - eliminating the possibility of removing the wrong drive.

StorView for JBODs also provides easy integration of Xyratex enclosures with external RAID systems, PCI RAID cards, and host based interfaces. Developers easily reference current values in SES pages and link to preloaded page definitions, for page layout and attribute definitions.

Integrated Family

Xyratex offers customers an integrated family of storage management software with StorView. StorView includes StorView for RAID, StorView Global, and StorView for JBODs. System Administrators easily navigate from a common event viewing monitor from network wide displays of RAID systems, JBODs, SBODs, and SAS attached EBODs for enclosure and installed disk drives event monitoring, configuration management, and other administration functions.



Features

- Enclosure and drive event monitoring
- SES page reporting
- Drive and component version, serial number and firmware release reporting
- Graphical display of drives, IO modules & power supplies
- Graphical display of drive status, fan speed and temperature
- Individual drive carrier light enablement
- Thumb wheel setting display
- VID and PID display

Xyratex StorView for JBODs

Making Storage Management Easy

System Support

Supported Operating Systems

Windows XP
Windows 2003 Advanced Server SP1 or latest
Red Hat Linux AS4 Update 2 or latest
Red Hat Linux AS3 Update 6 or latest
Red Hat Linux ES4 latest
Red Hat Linux ES3 latest
SUSE Linux ES 8
SUSE Linux ES 9
Windows XP
Windows 2003 Server

Supported Xyratex Enclosures

RA-4835
RS-1603
RS-1602
RS-1600
RS-1402
RS-1400
5010AA
5020AA

Supported HBAs

Qlogic 234x
Emulex LP9000
Emulex LP1050
LSI SAS HBA

SES Events

Event	Usual Severity
DRIVE_ADDED	Info (3)
DRIVE_REMOVED	Critical (1)
SES_INTERFACE_ADDED	Info (3)
SES_INTERFACE_REMOVED	Critical (1)
SES_INTERFACE_OFFLINE	Critical (1)
CONTROLLER_ADDED	Info (3)
CONTROLLER_REMOVED	Critical (1)
FAN_ADDED	Info (3)
FAN_REMOVED	Warning (2)
PSU_ADDED	Info (3)
PSU_REMOVED	Warning (2)
PSU_STATUS_CHANGE	Warning (2)
FAN_STATUS_CHANGE	Warning (2)
ALARM_STATUS_OFF	Info (3)
ALARM_STATUS_CHANGE	Warning (2)
ALARM_STATUS_CHANGE_CRITICAL	Critical (1)
FAN_SPEED_CHANGE	Info (3)
TEMP_READ_CHANGE	Info (3)
TEMP_CHANGE_HIGH	Critical (1)
TEMP_CHANGE_LOW	Critical (1)



USA Sales & Support

T +1 877 997 2839
T +1 877 XYRATEX

UK HQ

T +44(0)23 9249 6000
F +44(0)23 9245 3654

©2008 Xyratex (The trading name of Xyratex Technology Limited). Registered in England & Wales. Company no: 03134912. Registered Office: Langstone Road, Havant, Hampshire PO9 1SA, England. The information given in this brochure is for marketing purposes and is not intended to be a specification nor to provide the basis for a warranty. The products and their details are subject to change. For a detailed specification or if you need to meet a specific requirement please contact Xyratex: www.xyratex.com.