

# SAN Mapping Feature

Xyratex StorView™ management software enables association of Logical Drives to hosts. Automated control of individual controllers' cache, arrays, and devices via a web-based interface simplifies storage administration thereby decreasing administration cost and improving storage efficiency.

## • Standard Port Mapping

Xyratex RAID exposes all configured Logical Drives to all ports across RAID instances. When customers define Logical Drives they can mask Logical Drives by de-selecting appropriate check boxes. Any host connected directly or via a switch to the port can potentially access the Logical Drive. Some advanced switches with zoning can also restrict access to Logical Drives exposed to host connection ports. Customers can use port mapping to restrict or grant access to Logical Drives. This mapping technique works well with a few hosts accessing a few ports. When the number of hosts grows very large, a graphical method is preferable.

## • SAN Mapping

An optional upgrade for Xyratex RAID is a graphical interface for linking defined Logical Drives to hosts connected via Host Bus Adapters (HBAs) and Storage Area Network (SAN). SANs are very popular in today's mid-sized enterprises with large numbers of host systems and storage systems interconnected via high-speed Fibre Channel, Ethernet, and SAS Switches. Customers that map Snapshot Logical Drives to hosts for point-in-time version access and window-less back-up require SAN Mapping.

## • Licensing SAN Mapping

All versions of Xyratex StorView include SAN Mapping capability. This capability is activated by entering a valid license key. Customers can order SAN Mapping licenses at ordering time or afterwards. Customers will receive a License Certificate with instructions for obtaining License Keys. Xyratex partners may also perform this licensing prior to sending systems to customers. The License Certificate contains a serial number that they enter on a Web Page, along with the Xyratex RAID Configuration World-Wide Name (WWN) they want to enable SAN Mapping on. This will generate a License Key that the customer enters to enable SAN Mapping via the Licenses Management window on StorView.

### Xyratex RAID Feature Codes

| Xyratex RAID Models | Single Controller Model | Dual Controller Model |
|---------------------|-------------------------|-----------------------|
| F5412E, E5412E      | SW-SANMAP-5412-10       | SW-SANMAP-5412-20     |
| F6412E              | SW-SANMAP-6412-10       | SW-SANMAP-6412-20     |
| F5404E              |                         | SW-SANMAP-5404-20     |
| F6500E              | SW-SANMAP-6500-10       | SW-SANMAP-6500-20     |

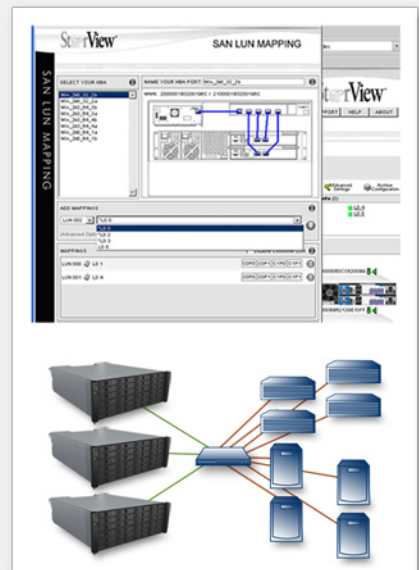
## Features

- Easy one-to-one mapping of Logical Drives to Hosts
- Graphical depiction of Controllers, Switches and Hosts

## Standard Port Mapping



## SAN Mapping



### USA Sales & Support

T +1 877 997 2839  
T +1 877 XYRATEX

### UK HQ

T +44(0)23 9249 6000  
F +44(0)23 9245 3654